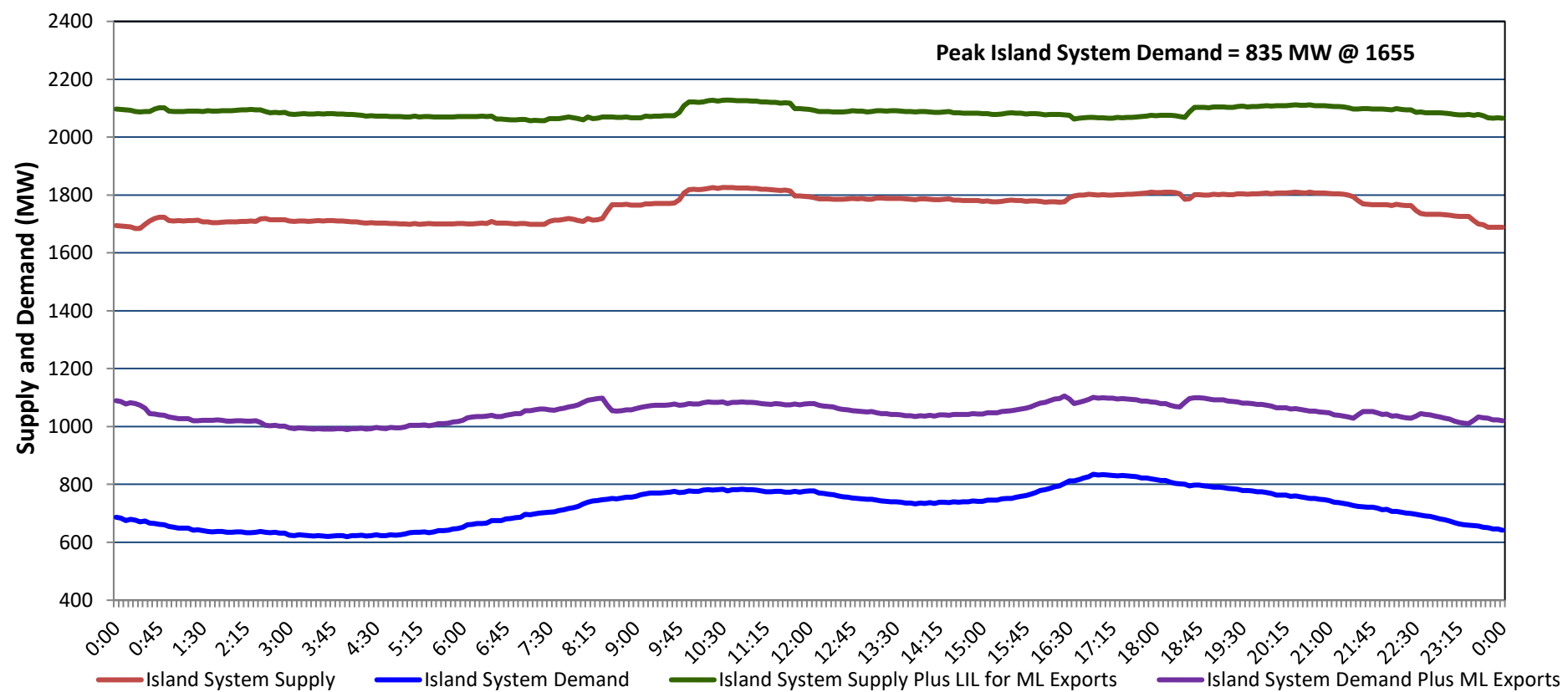


# Newfoundland Labrador Hydro (NLH) Supply and Demand Status Report Filed Monday, November 18, 2024

## Section 1 Island Interconnected System - Supply, Demand & Exports Actual 24 Hour System Performance For Saturday, November 16, 2024



### Island Supply Notes For November 16, 2024 <sup>1</sup>

- A As of 0000 hours, October 20, 2024, Holyrood Unit 1 unavailable due to forced extension to planned outage (170 MW).
- B As of 0700 hours, November 10, 2024, Holyrood Gas Turbine unavailable due to planned outage (123.5 MW).
- C At 0855 hours, November 16, 2024, St. Anthony Diesel Plant available at 8.7 MW due to planned derating (9.7 MW).
- D At 1300 hours, November 16, 2024, St. Anthony Diesel Plant available at 7.7 MW due to planned derating (9.7 MW).
- E At 1923 hours, November 16, 2024, St. Anthony Diesel Plant available at full capacity (9.7 MW).

## Section 2 Island Interconnected System - Supply, Demand & Outlook

Sun, Nov 17, 2024	Island System Outlook <sup>2</sup>	Seven-Day Forecast	Island System Daily Peak Demand (MW)	
			Forecast <sup>8</sup>	Adjusted <sup>6</sup>
Island System Supply: <sup>4</sup>	1,785 MW	Sunday, November 17, 2024	885	835
NLH Island Generation: <sup>3,7</sup>	1,400 MW	Monday, November 18, 2024	900	820
NLH Island Power Purchases: <sup>5</sup>	115 MW	Tuesday, November 19, 2024	920	840
NP and CBPP Owned Generation:	205 MW	Wednesday, November 20, 2024	980	900
LIL/ML Net Imports to Island: <sup>9</sup>	65 MW	Thursday, November 21, 2024	1,000	920
		Friday, November 22, 2024	980	900
7-Day Island Peak Demand Forecast:	1,055 MW	Saturday, November 23, 2024	1,055	975

### Island Supply Notes For November 17, 2024

- Notes:
1. Generation outages for running and corrective maintenance are included. These are not unusual for power system operations. They generally do not impact customer supply. Hydro schedules outages to system equipment whenever possible to coincide with periods when customer demands are low and sufficient supply reserves are available. However, from time to time equipment outages are necessary and reserves may be impacted.
  2. As of 0800 Hours.
  3. Gross continuous unit output.
  4. Gross output from all Island sources (including Note 4).
  5. NLH Island Power Purchases include: ML Imports, Exploits Generation, Rattle Brook, Star Lake, Wind Generation and capacity assistance (when applicable).
  6. Adjusted for interruptible load and the impact of voltage reduction when applicable.
  7. Due to limitations inherent in the design of combustion turbines, the output of combustion turbines may be reduced in the event that ambient temperatures exceed the threshold required for full rated output. This threshold is dependent on the design of each turbine.
  8. Does not include ML Exports.
  9. LIL Import sunk in the Island System. Actual LIL flows will be restricted by various system conditions including, but not limited to, Island Load, ML Exports and Avalon Unit status.

## Section 3 Island Peak Demand and Exports Information Previous Day Actual Peak and Current Day Forecast Peak

Sat, Nov 16, 2024	Island Peak Demand <sup>10</sup>	16:55	835 MW
	Exports at Peak		266 MW
	LIL Net Imports to Island		2,338 MWh
Sun, Nov 17, 2024	Forecast Island Peak Demand		885 MW

- Notes: 10. Island Demand is supplied by NLH generation and purchases, LIL Imports plus generation owned and operated by Newfoundland Power and Corner Brook Pulp & Paper (Deer Lake Power, DLP).